

# Cino FuzzyScan Scanners Firmware Upgrade Instruction

(Rev. B9)

March 31, 2023

This article outlines the steps to upgrade the scanner firmware.

## **System Requirements**

- Windows 7 32-bit SP1 or above
- Windows 7 64-bit SP1 or above
- Windows 8 or above
- Windows Vista SP2 or above
- Windows XP SP3 or above
- Windows 10 or above

## **Upgrade Utility**

FuzzyScan PowerTool 3

You can download the latest utility from Cino's website: <http://www.cino.com.tw>


## **Applicable Models**

- Corded Handheld Imagers  
2D Imagers: A780, A770, A680, A670, A660, A570, A560  
1D Imagers: F780, L780, F680, L680, F560
- Cordless Handheld Imagers  
2D Imagers: A788BT, A778BT, A688BT, A678BT, A668BT  
A780BT, A770BT, A680BT, A670BT, A660BT  
1D Imagers: F788BT, L788BT, F688BT, L688BT  
F780BT, L780BT, F680BT, L680BT
- Fixed Mount Scanners  
2D Scanners: FA480, FA470, FA460  
1D Scanners: FM480
- Companion Scanners  
2D Scanners: PA680BT, PA670BT  
1D Scanners: PF680BT, PL680BT
- Smart Cradles  
Cordless Handheld Imager: HB4132, HB2112  
Companion Scanner: HB3112

- Scan Modules and Scan Engines  
2D Engine: SE6850, SE6750  
1D Engine: SE380, SE480
- Scan Modules  
2D Module: SM6850, SM6750, SM5800, SM5600  
1D Module: SM380

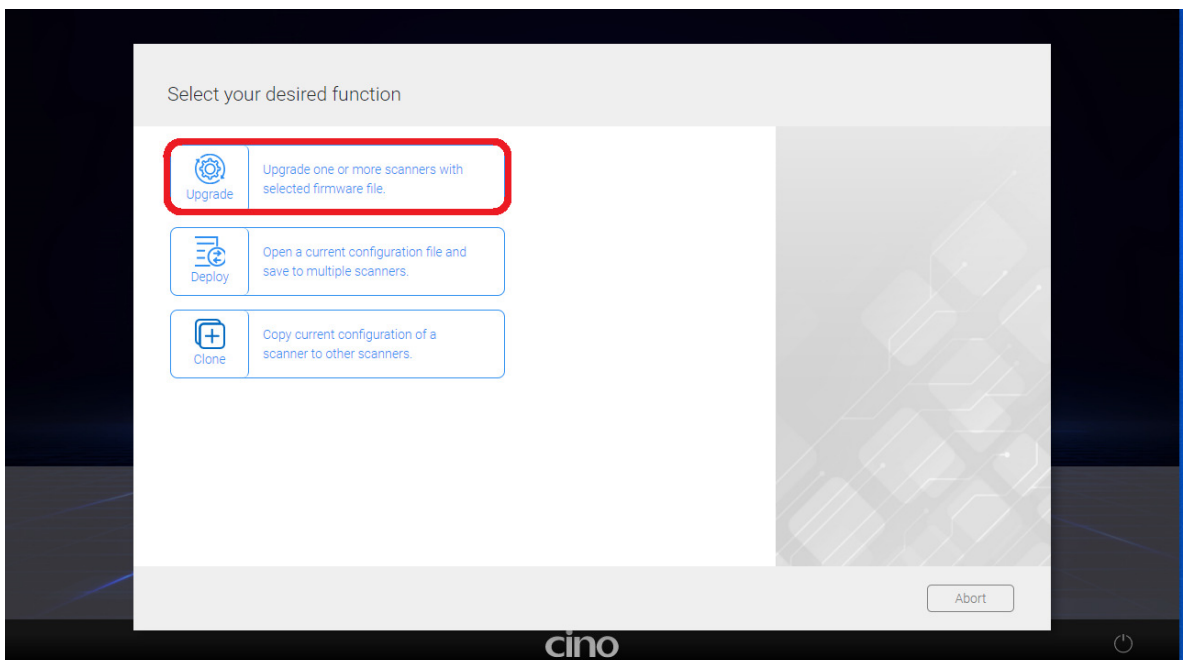
## Upgrade Procedure

### A. FuzzyScan Corded Scanners, Fixed Mount Scanners, Scan Engines, and Scan Modules

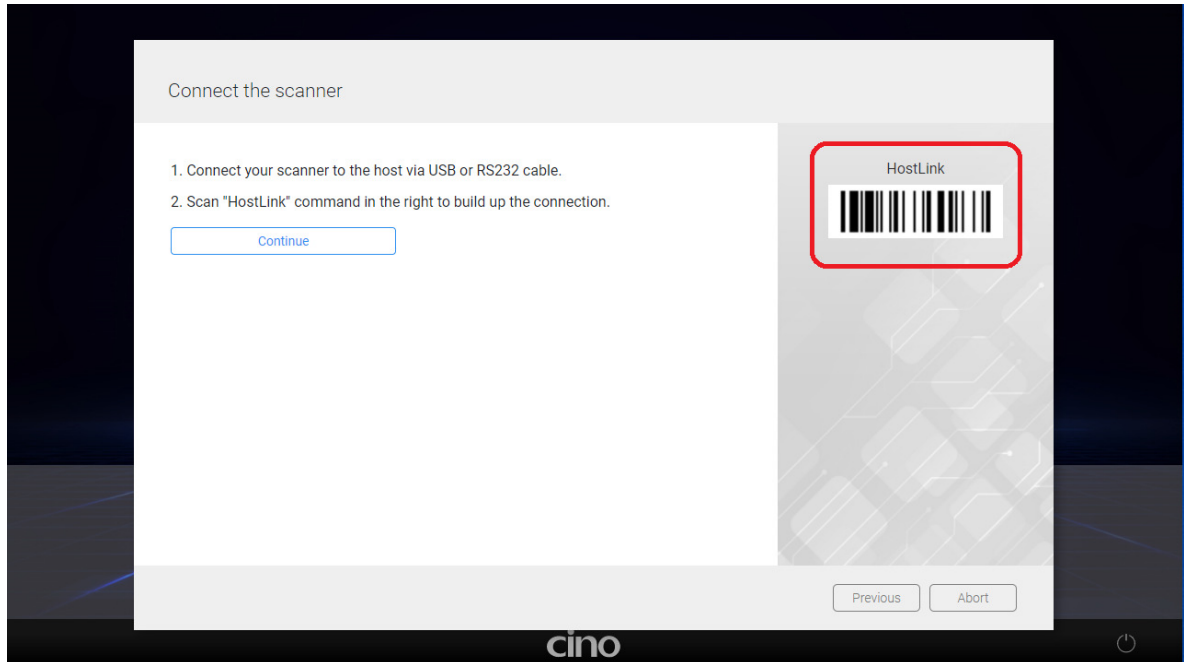
1. Ensure that **FuzzyScan PowerTool 3** has been installed on your host properly.
2. Double click the  icon (FuzzyScan PowerTool 3 shortcut) on the desktop to launch **FuzzyScan PowerTool 3**.
3. Connect the FuzzyScan Corded scanner to the host with the a USB or a RS232 cable and scan the corresponding host interface quick set command.
4. Go to **FuzzyScan PowerTool 3** home screen and click on **[Deployment]**.



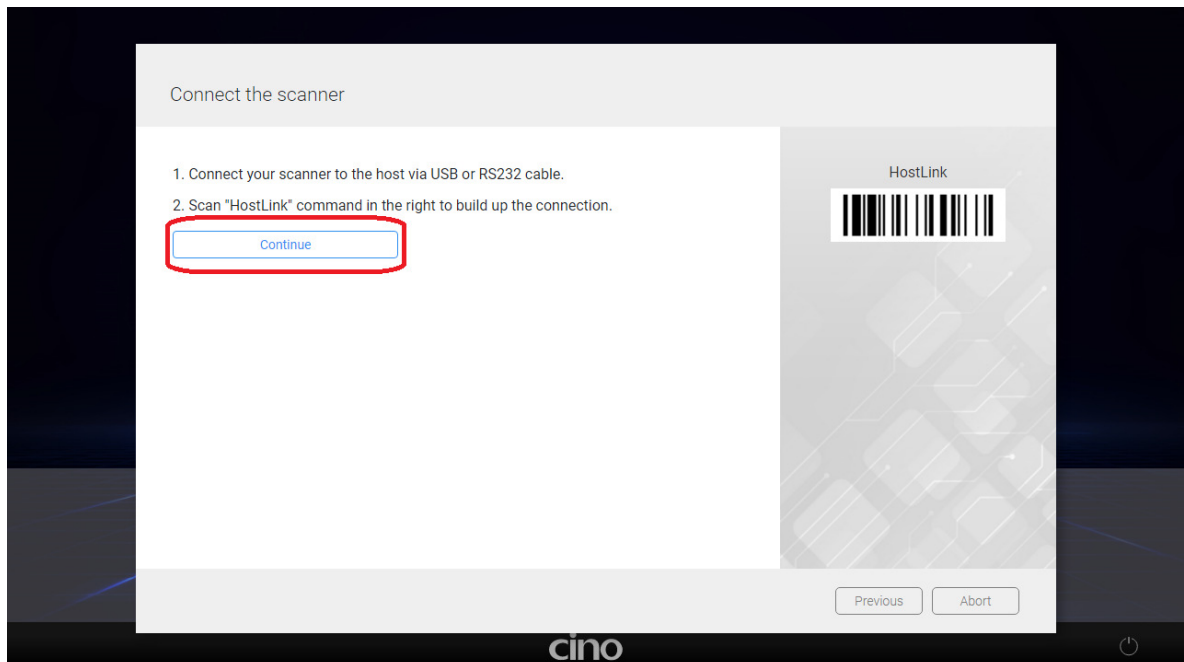
5. Click the **[Upgrade]** option on the menu bar.



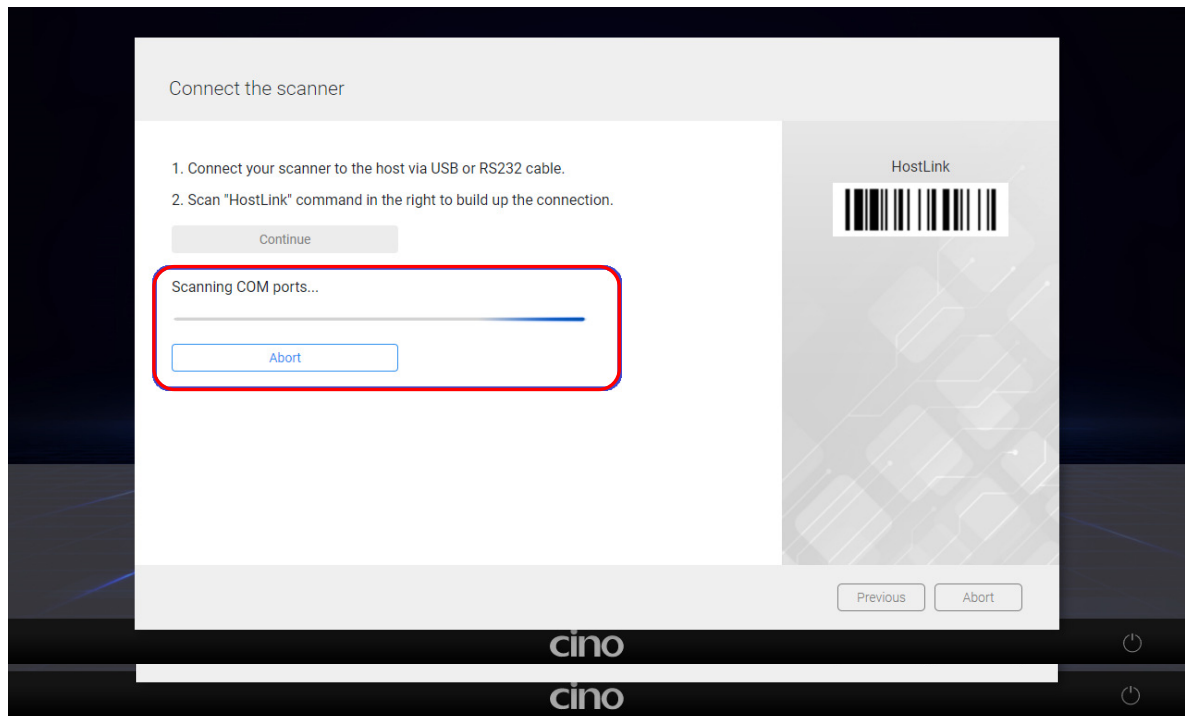
6. Use your scanner to scan the [Host Link] barcode displayed on **FuzzyScan PowerTool3**. You will hear **4 beep sounds**.



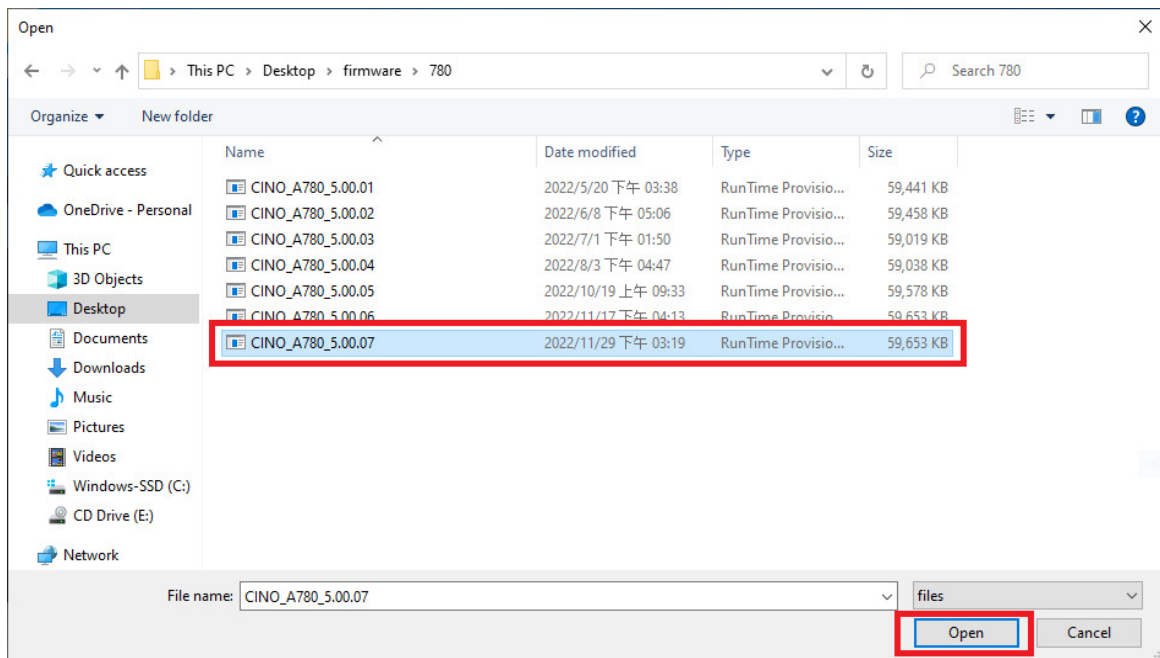
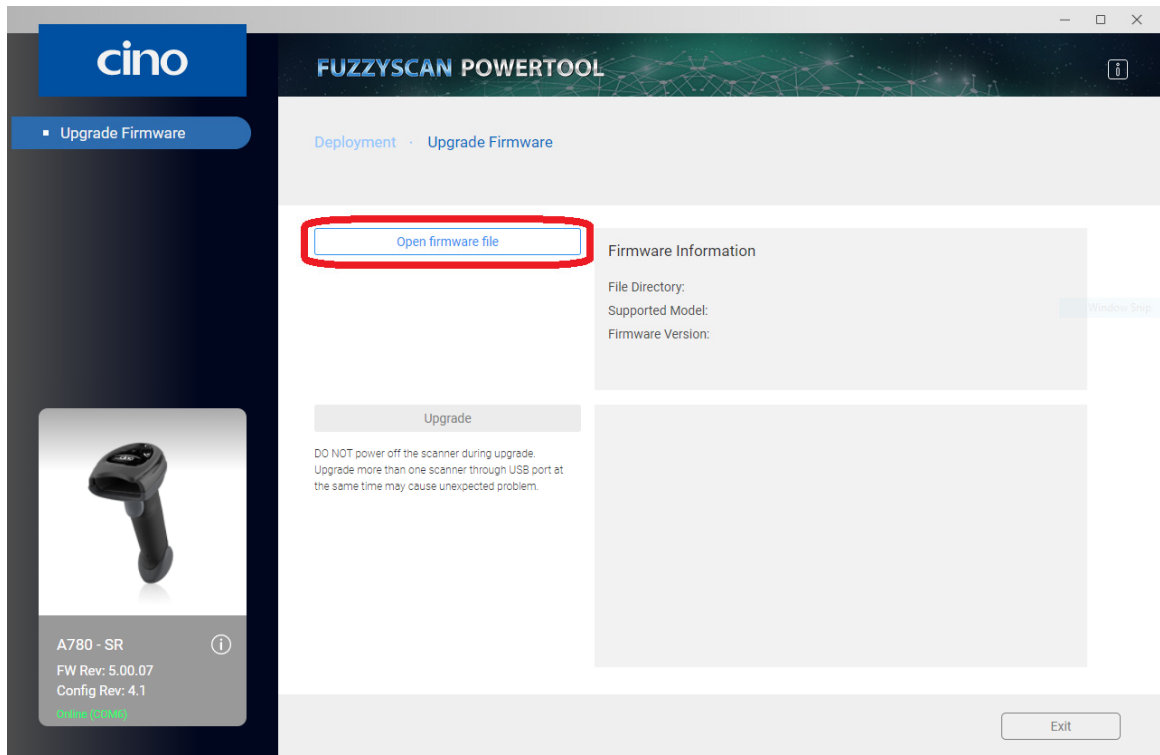
7. Click the [continue] on **FuzzyScan Powertool 3** to initiate the COM Port scanning.



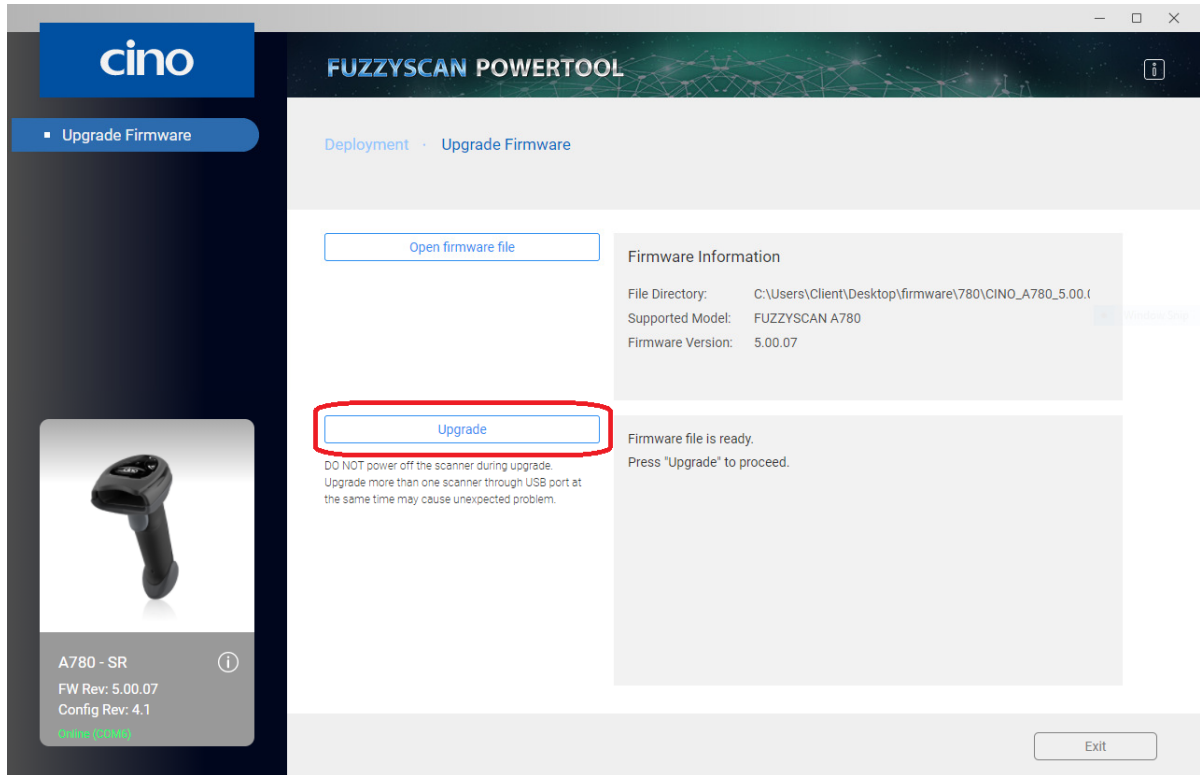
8. Wait for **FuzzyScan Powertool 3** to scan and locate your scanner. Once detected, **double-click** on the scanner you want to upgrade.



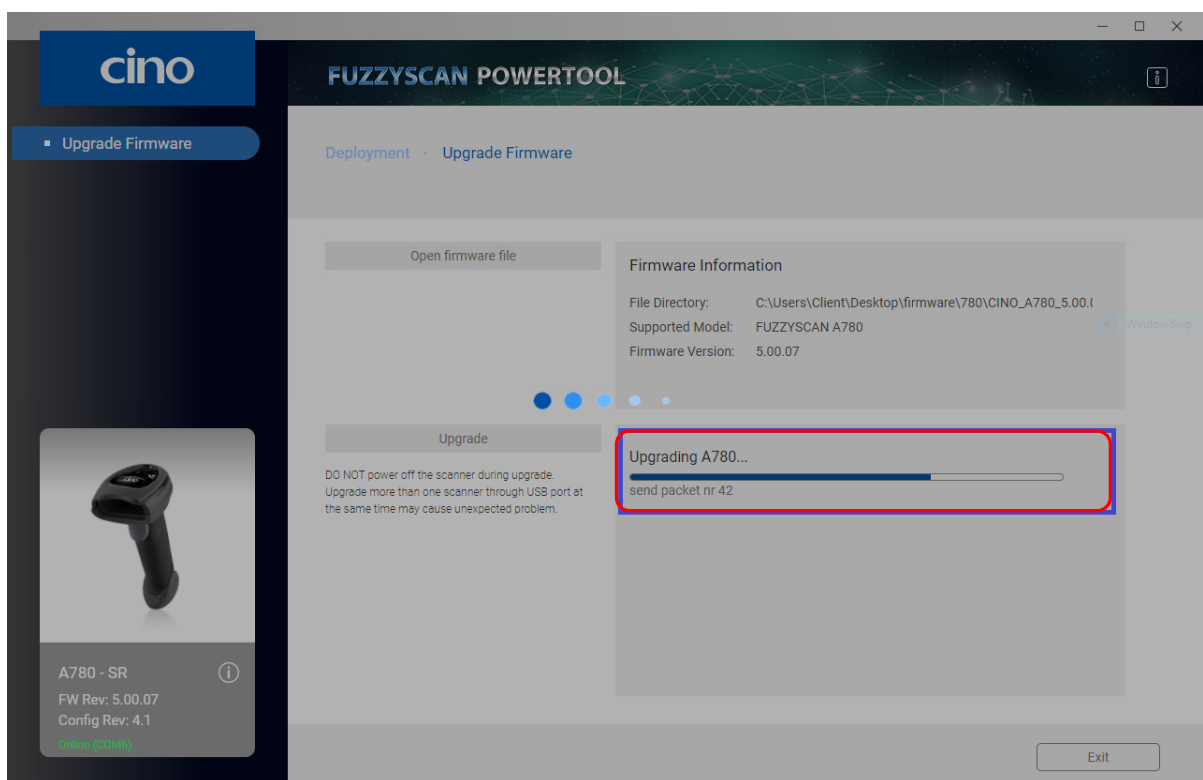
9. Click on the **[open firmware file]**. In the pop-up window, select the correct **firmware file** for your scanner, then click **[open]**.



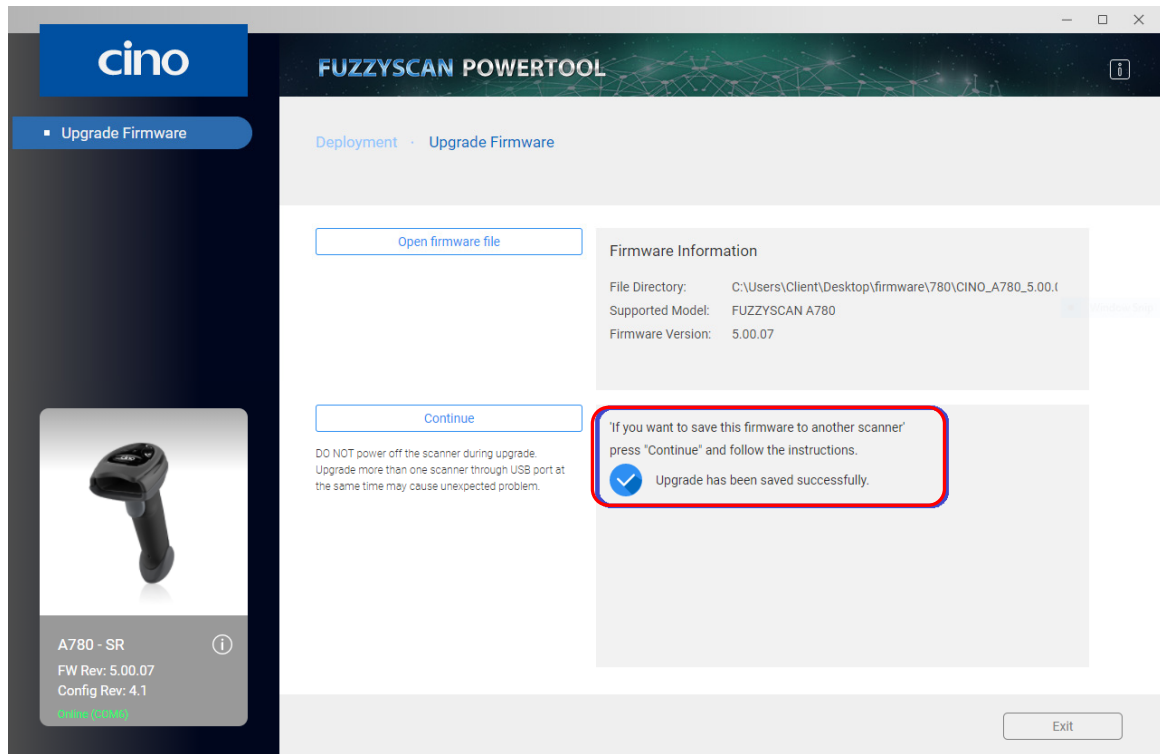
10. After confirming the right scanner and firmware file are selected, click **[upgrade]** to start the upgrade process. You will see **“Handshaking...”** showing on **FuzzyScan PowerTool 3**.




11. During the update process, you will hear **short click beeps** and the status indicator will light red. You can check the upgrade process from the blue process bar indicated below.



12. When the update procedure is complete, you will hear **4 beep sounds**, and the status indicator will blink green and red alternatively. You will see a **blue check mark** showing on **FuzzyScan PowerTool 3**.

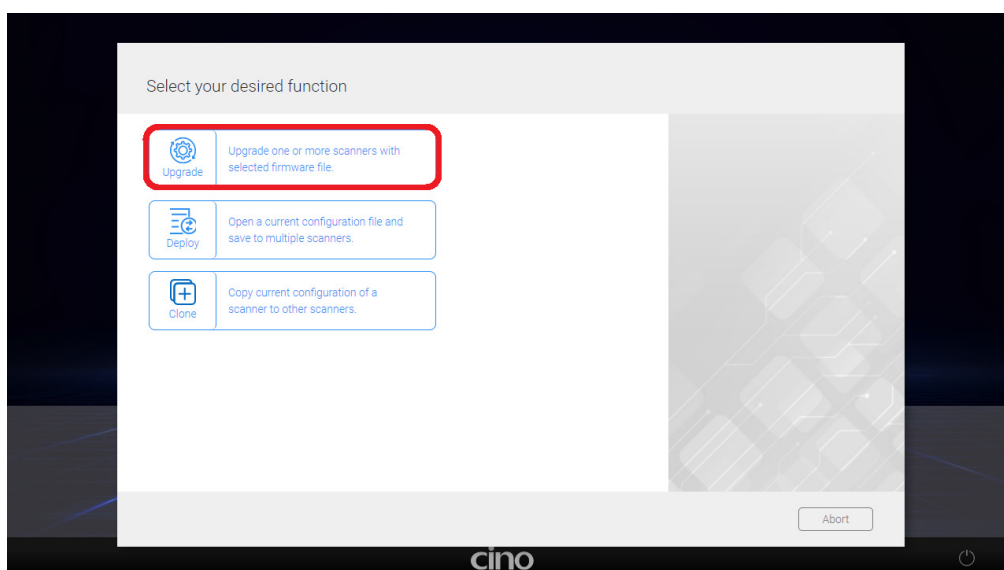


## B. FuzzyScan Cordless Handheld Imagers and Companion Scanners

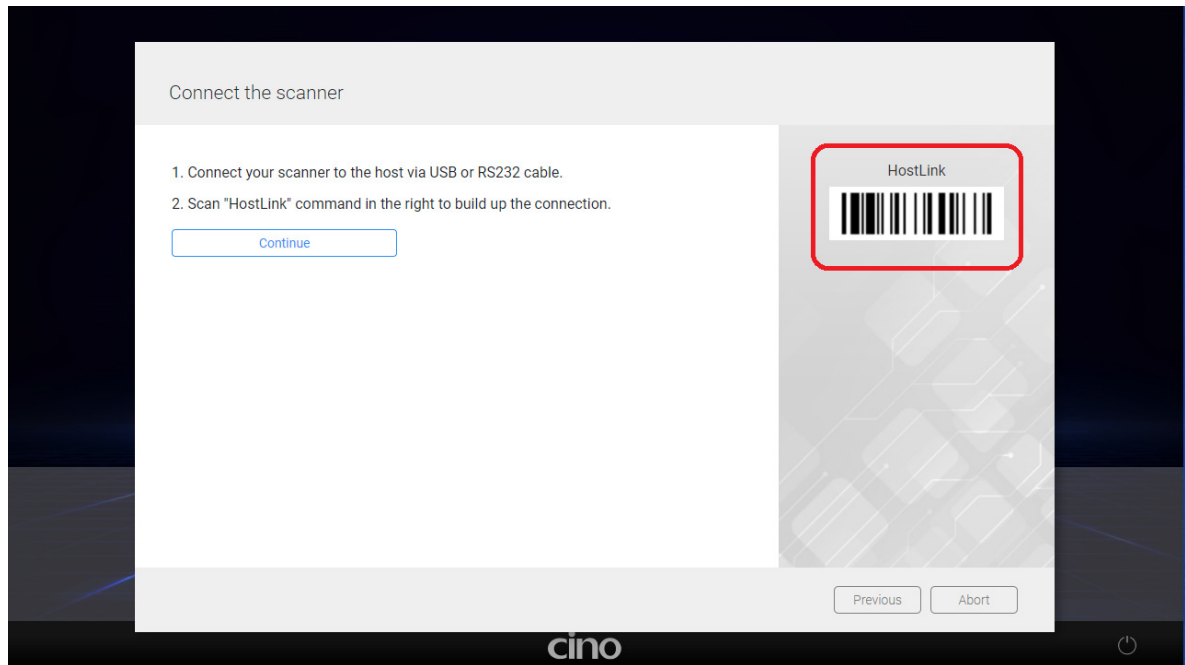
1. Ensure that **FuzzyScan PowerTool 3** has been installed on your host properly.
2. Double click the  icon (FuzzyScan PowerTool 3 shortcut) on the desktop to launch **FuzzyScan PowerTool 3**.
3. Connect the host to the Smart Cradle/Charging Cradle via a USB or a RS232 cable.
4. Use your scanner to scan the **[Quick Pair]** barcode displayed on the Smart Cradle to pair the two devices. Once Paired, you will hear 4 beeps and both cradle and scanner indicators will light blue.
5. Use your scanner to scan the corresponding host interface quick set command
6. Go to **FuzzyScan PowerTool 3** home screen and click on **[Deployment]**.



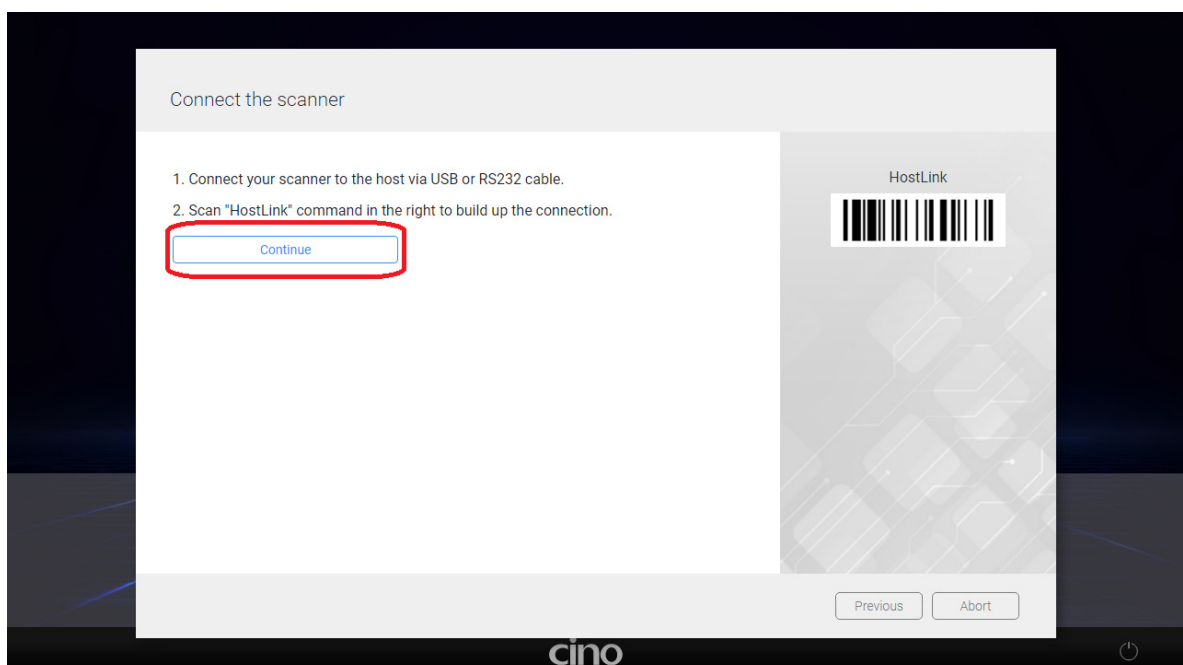
7. Click the **[Upgrade]** option on the menu bar.



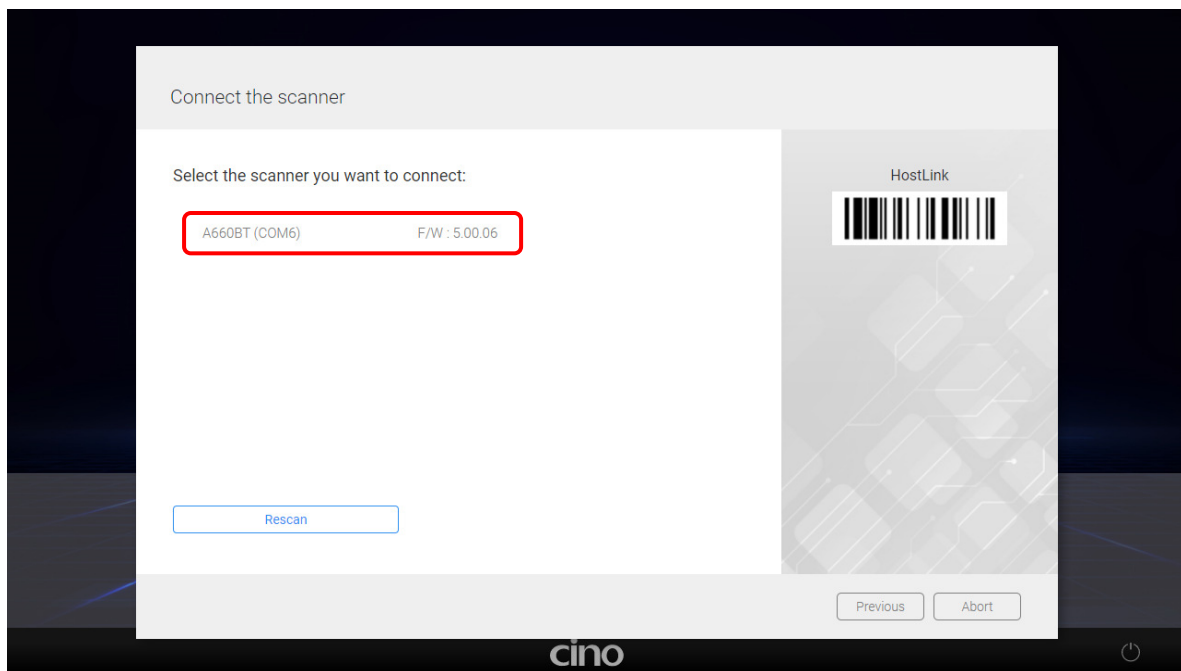
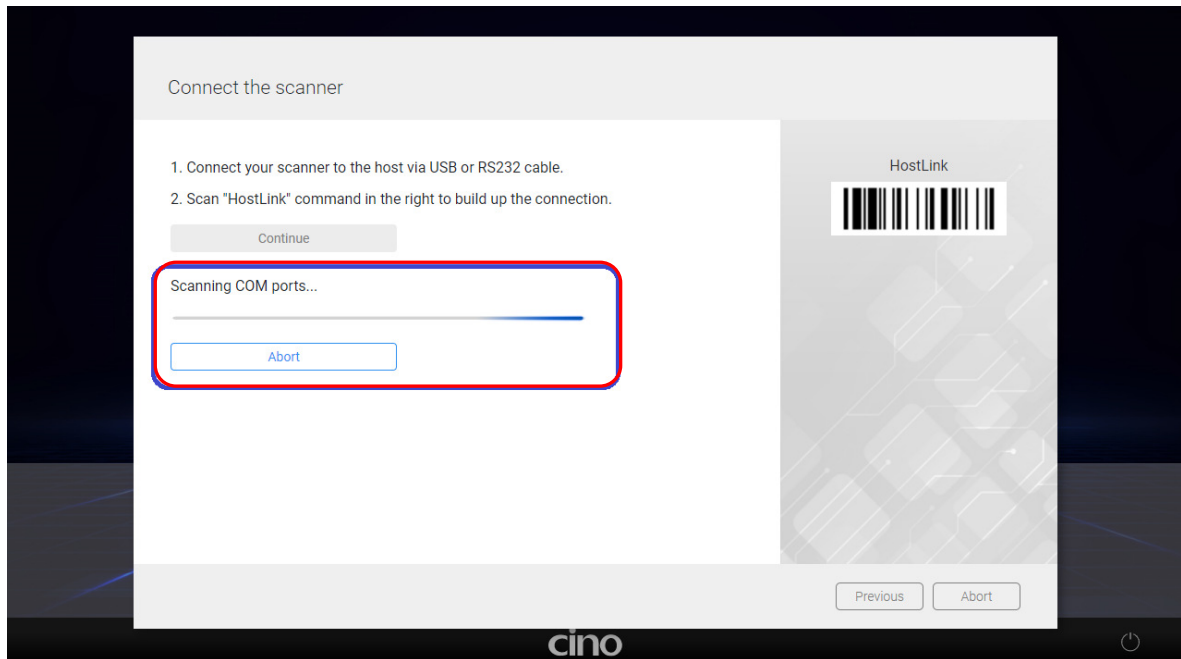
8. Use your scanner to scan the **[Host Link]** barcode displayed on the **FuzzyScan PowerTool 3**. The scanner will emit 3 beeps and the cradle will emit 4 beeps.



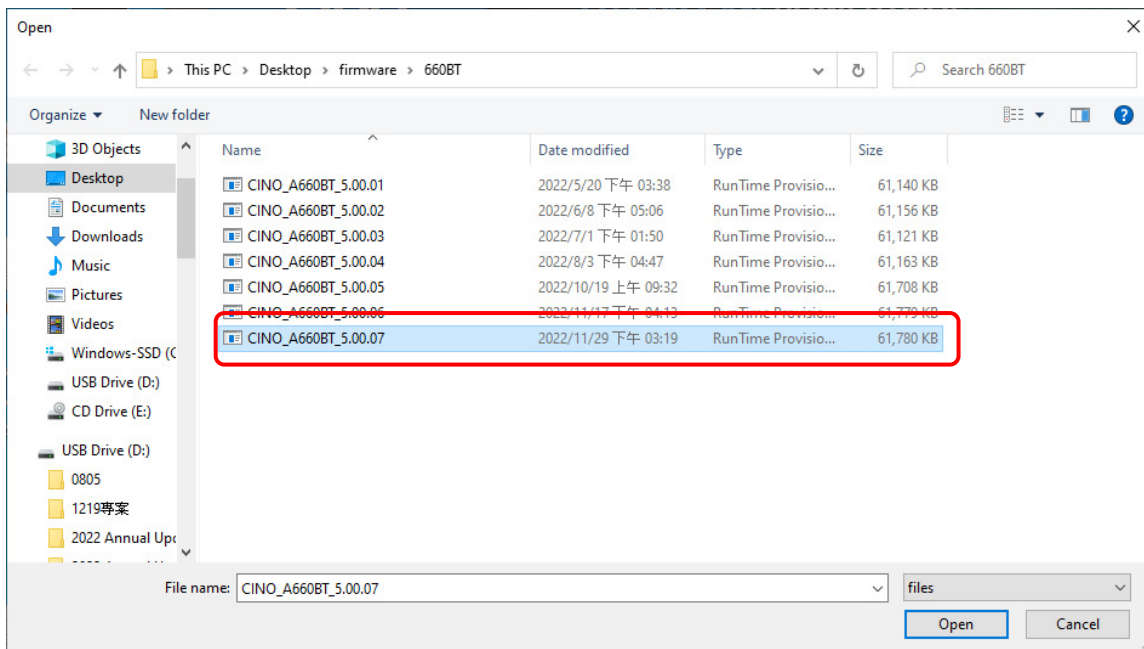
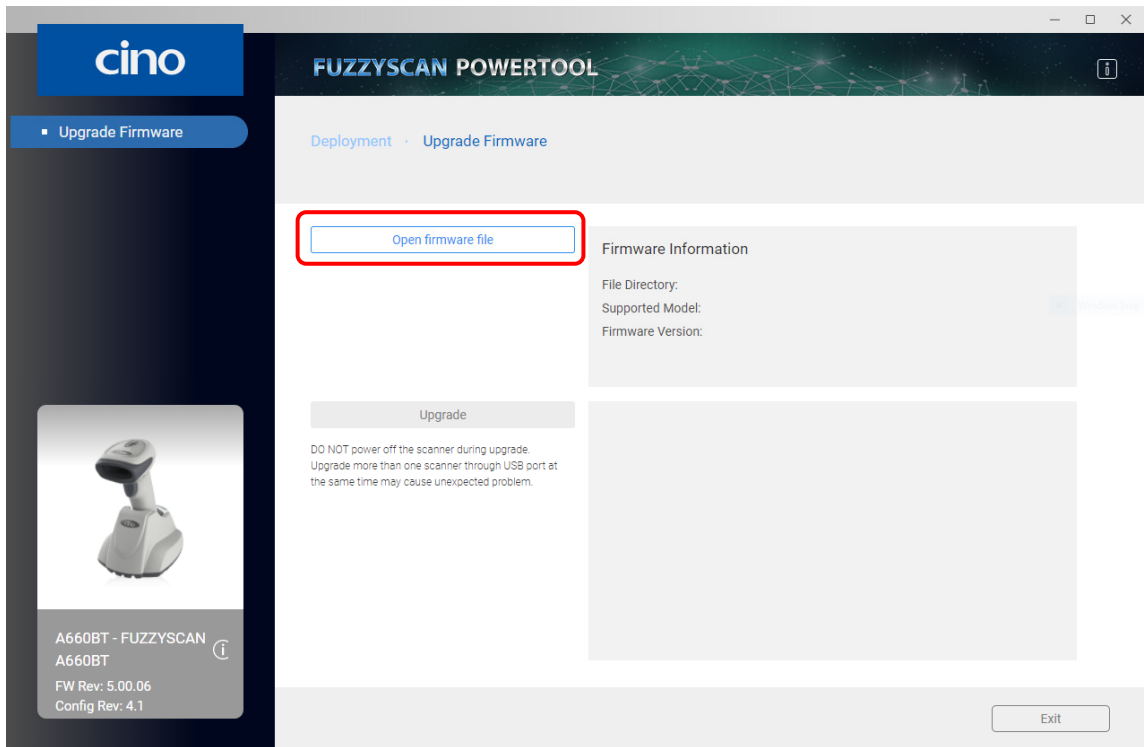
9. Click the **[continue]** on **FuzzyScanPowertool 3** to initiate the COM Port scanning.



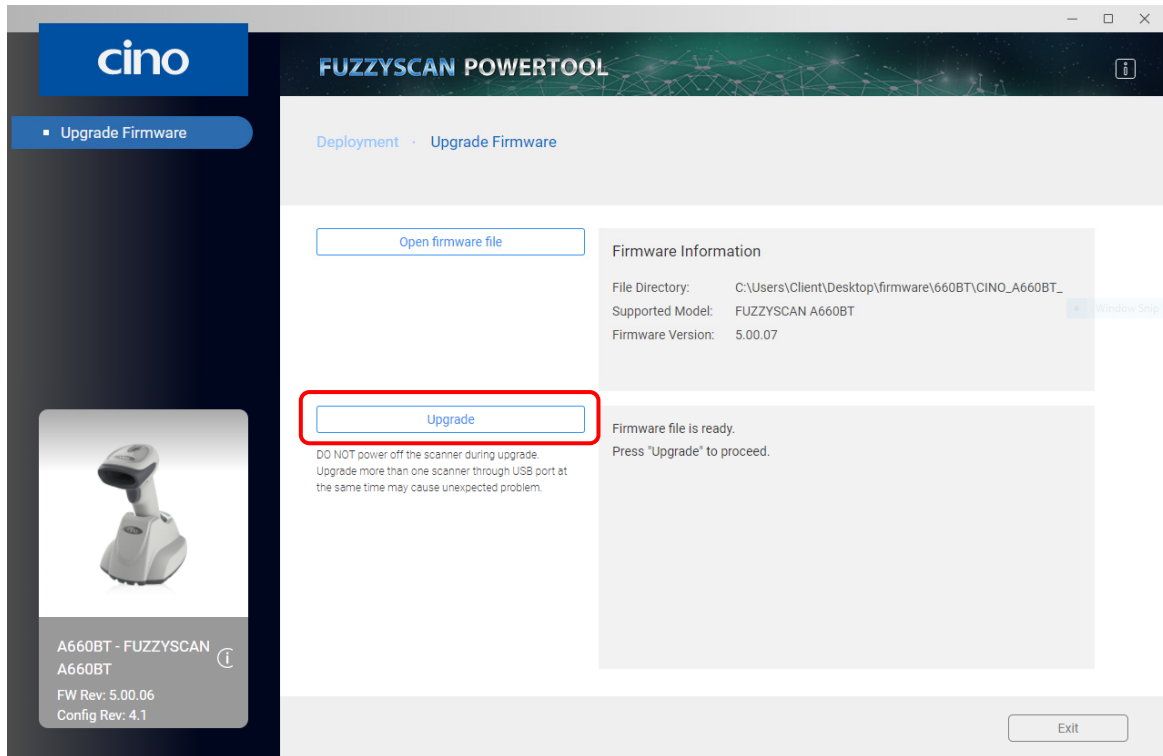
10. Wait for **FuzzyScan Powertool 3** to scan and locate your scanner. Once detected, **double-click** on the scanner you want to upgrade.



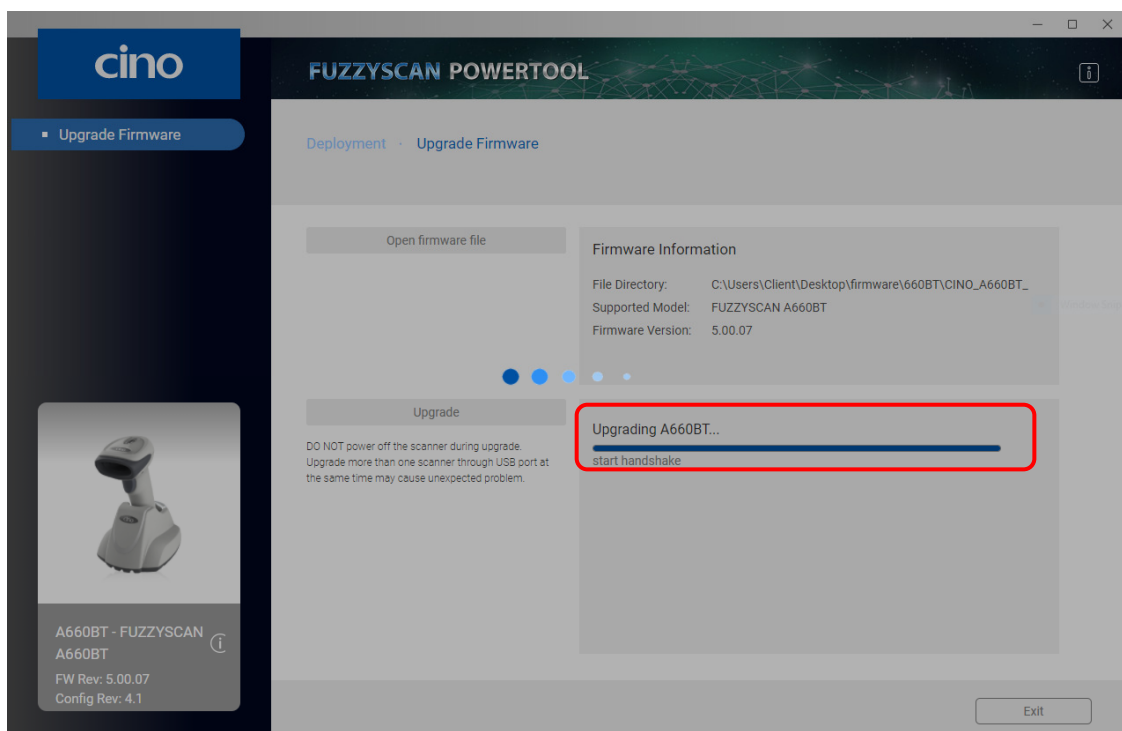
11. Click on the **[open firmware file]** option. In the pop-up window, select the correct **firmware file** for your scanner, then click **[open]**.



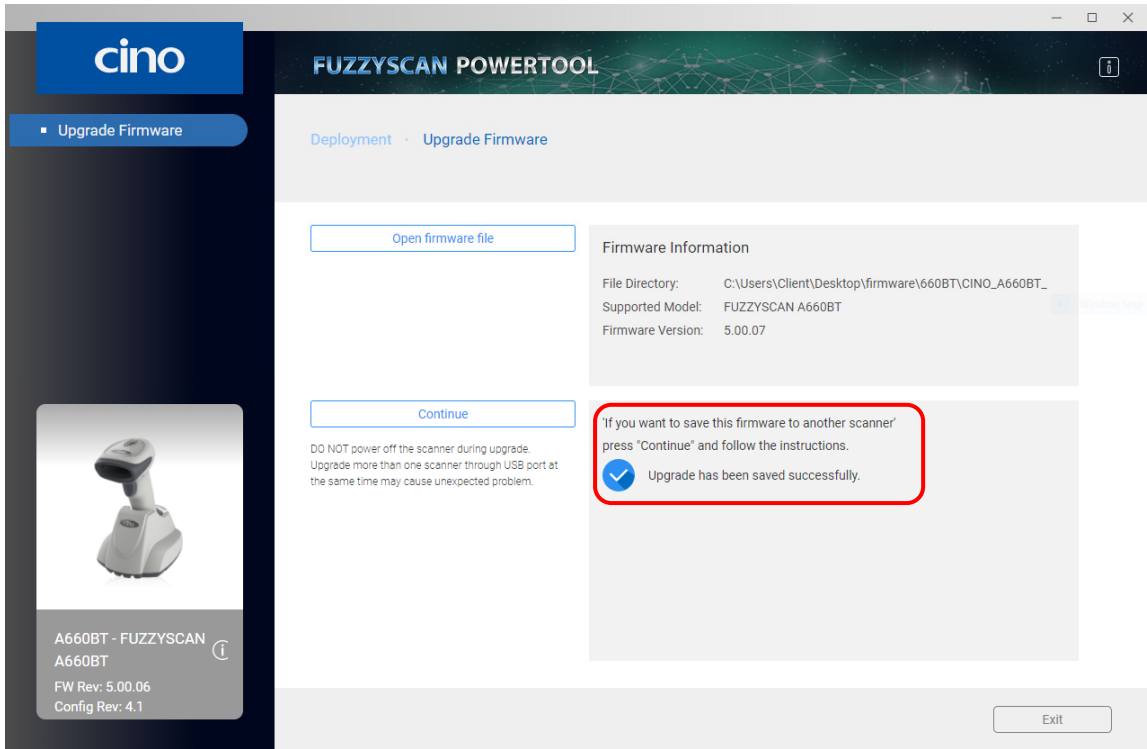
12. After confirming the right scanner and firmware file are selected, click **[upgrade]** to start the upgrade process. You will see **“Handshaking...”** showing on **PowerTool 3**.




13. During the update process, you will hear **short click beeps** and the status indicator will light red. You can check the upgrade process from the blue process bar indicated below



14. When the update procedure is complete, you will hear **4 beep sounds**, and the status indicator will blink green and red alternatively. You will see a **blue check mark** showing on **FuzzyScan PowerTool 3**.

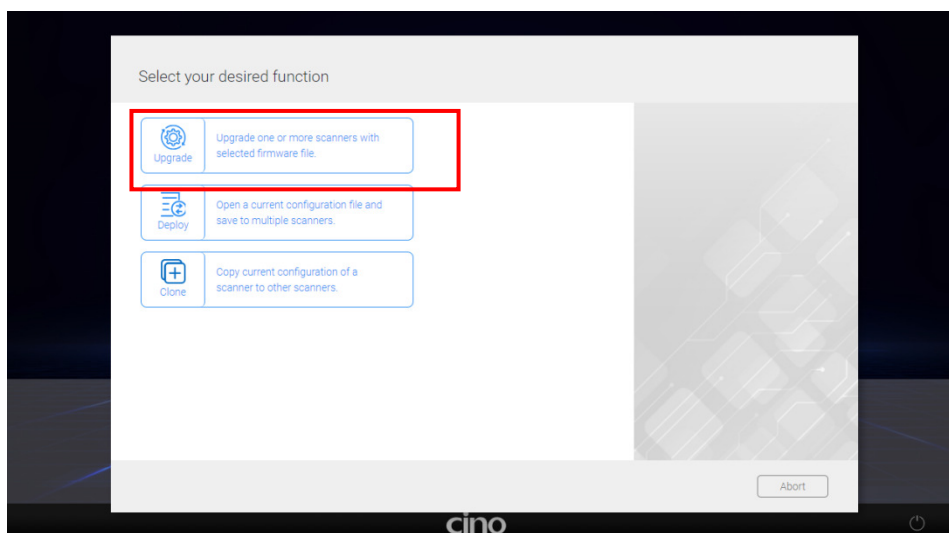


### C. FuzzyScan Smart Cradles

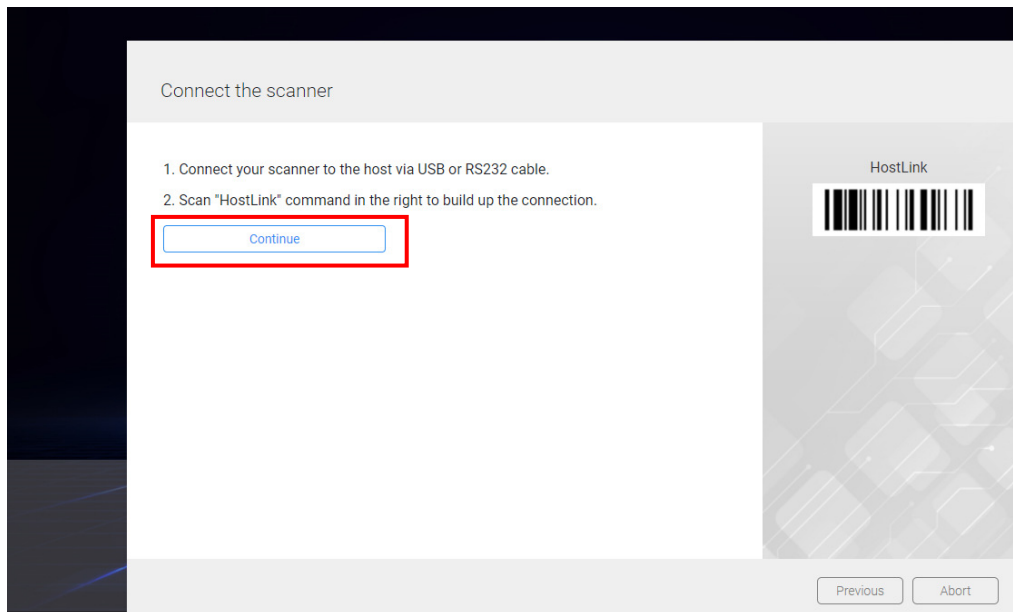
1. Ensure that **FuzzyScan PowerTool 3** has been installed on your host properly.
2. Double click the  icon (the shortcut of FuzzyScan PowerTool) on the desktop to launch **FuzzyScan PowerTool 3**.
3. Connect the host to the Smart Cradle by shipped USB or RS232 cable.
4. Plug the **Power Supply Unit** into an AC wall socket (Please **do not** connect the power supply to the cradle yet).
5. Press and hold the **Paging/Reset** button on the Smart Cradle.
6. **While holding the Paging/ Reset button**, plug the power cord of the power supply unit into the DC power jack of the Smart Cradle.
7. When you see the left side indicator of the smart cradle flashing green at regular intervals, release **Paging/Reset** button.
8. Click **[Deployment]** on **FuzzyScan PowerTool3**.



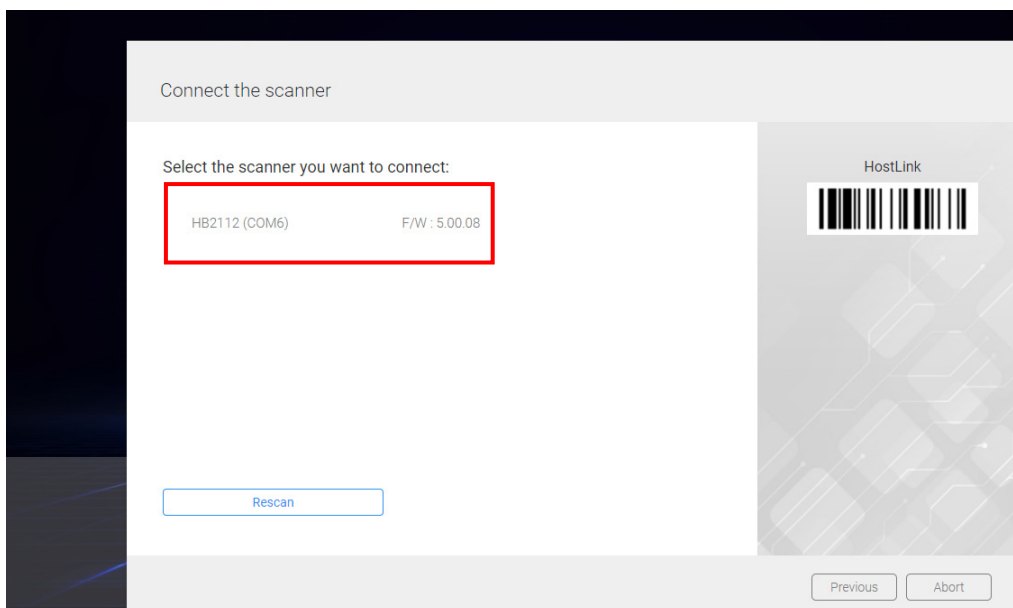
9. Click **[Upgrade]** on **FuzzyScan PowerTool3**.



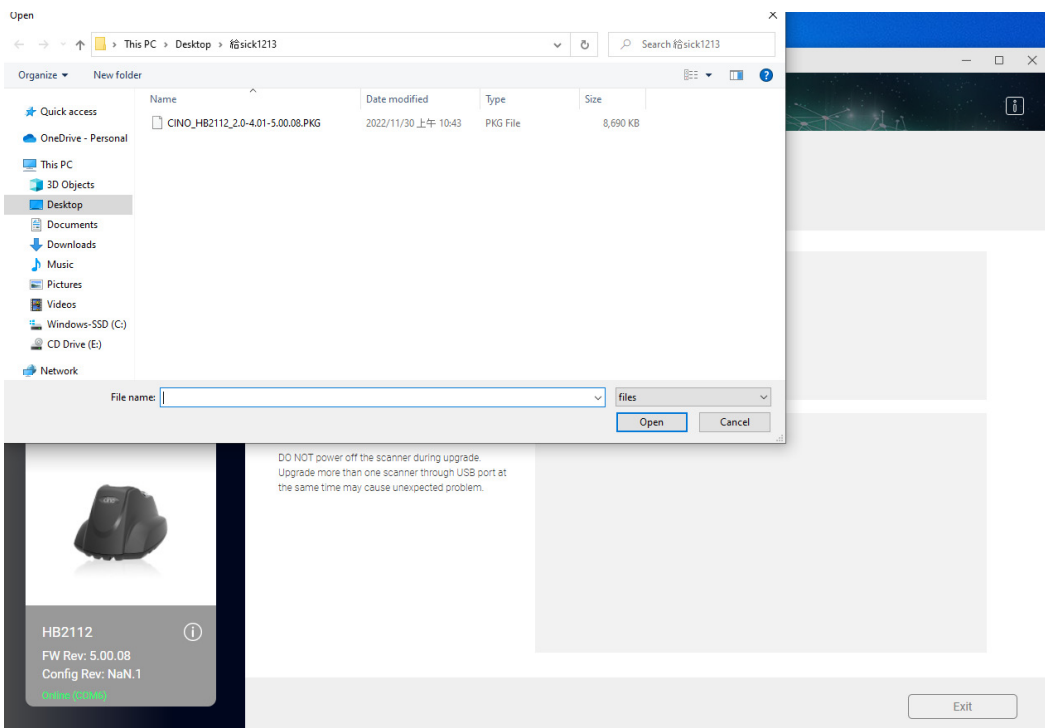
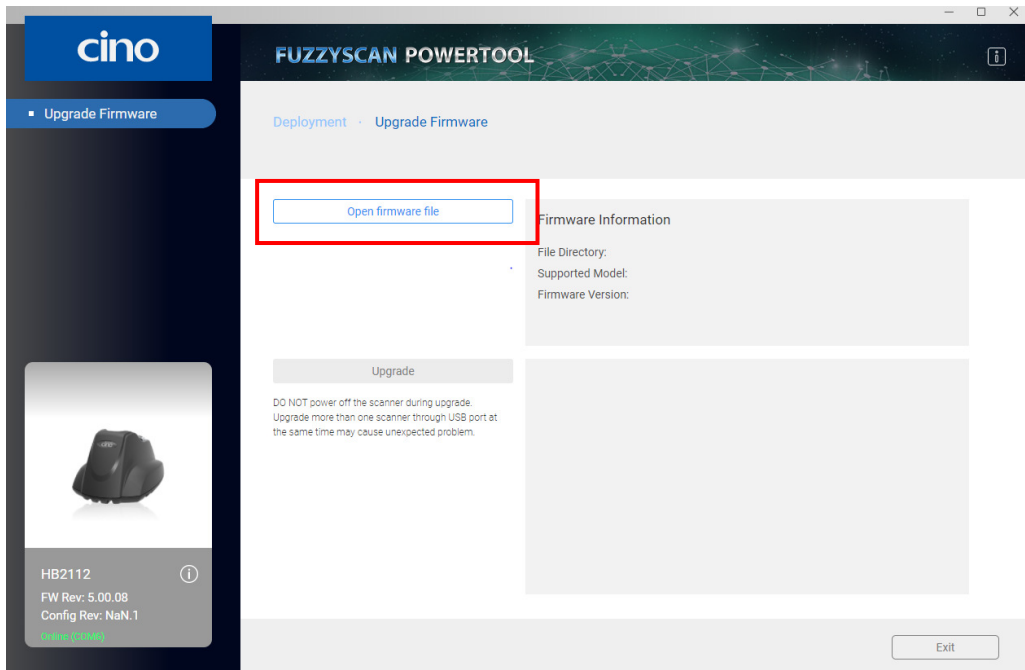
10. Click [Continue] on FuzzyScan PowerTool3.



11. Double click the smart cradle you are going to upgrade. For example, click on the “HB2112(com6)” shown in the following picture.



12. Click on **[Open firmware file]**. Then, click the firmware file you are going to use and click **[Open]**.



13. Click [Upgrade] and you will see the message “Upgrade has been saved successfully.”

