



onYsID

onyScan BCR

barcode scanner



The onyScan BCR is a robust barcode scanner for 2D bar coded boarding passes (BCBP's), fully compliant with check-in and security checkpoint applications. Its flatbed design, the bright and clearly visible LEDs for visual feedback, and its adjustable loud audio beepers have been carefully developed to facilitate an efficient passenger process at the gates, guaranteeing an optimized ease of use for passengers and operators.

The onyScan BCR provides a proven instant reading capability, in all - even bright light - environments, including thin paper boarding passes, smart phones, large tablets, and smart watches. Committed to protecting the environment, the onyScan BCR comes with non-hazardous components and features a unique "sleep mode" function, allowing airports to benefit from a potential energy saving benefit of up to 30%.



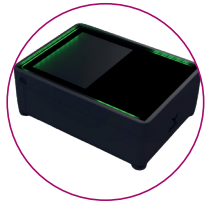
Ruggedized design

Made in Germany: industrial manufacturing, for demanding environments (temperatures, dust, light, airport operations).



On-site glass replacement

A unique glass maintenance concept: easily replaceable scanning window, in case of scratches or vandalism.



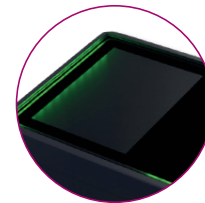
Flatbed design

For passenger process in an obstacle free environment. Especially useful when a BCBP is presented on a smartphone, tablet or smartwatch.



Smart design & footprint

Small footprint to fit in all types of boarding gates, also to be embedded in a desk. Cable connectors sunken into device for reduced footprint.



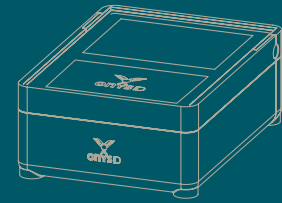
High-performance barcode engine

Powerful embedded barcode engine with 1D/2D barcode read capability. High-performance: barcodes are read instantly.



Clear visual & audible feedback

Integrated bright LEDs on 3 sides of the device, and a user-programmable audio beep to confirm successful data capture.



onyScan BCR

DOCUMENTS



USAGE

Read data from bar coded boarding passes (BCBP).
Optional: NFC reading.

SPECIALITY

On-site replacement of scanning window possible.

TECHNICAL DETAILS

- USB 2.0 connection, 2x serial ports
- Interfaces: VCOM, PCSC (NFC reading)
- NFC possible according to ISO 14443 A/B
- Audible feedback via buzzer
- Recessed cable port for extra small footprint
- Various mounting options: screw inlets in device base
- Compliant to: WEEE, RoHS, FCC and CE (EN55032 ClassB)

MEASUREMENTS

Device:	140 x 190 x 70 mm, 5.5 x 7.5 x 2.8 inches
Scanning window:	103 x 79 mm, 4 x 3.1 inches