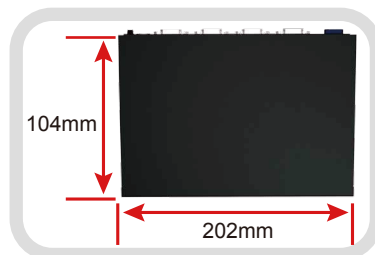
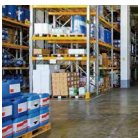
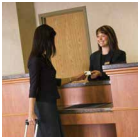


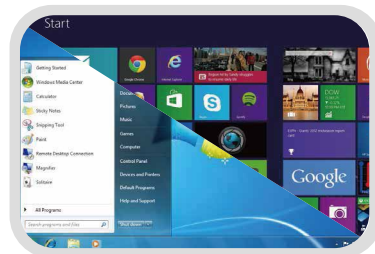
# Boxster 3

## Fanless Embedded BOXPC

Fanless Embedded Box PC, robust housing with Intel® Bay Trail SoC processor, for the space-limited space applications.



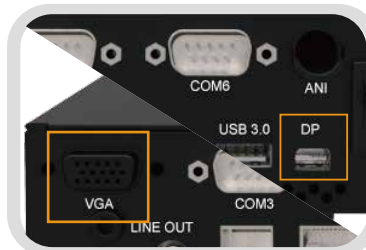
Small foot print



Support Windows 7 / Windows 8



Heat Sink fan-less enclosure



Support Display port and VGA output

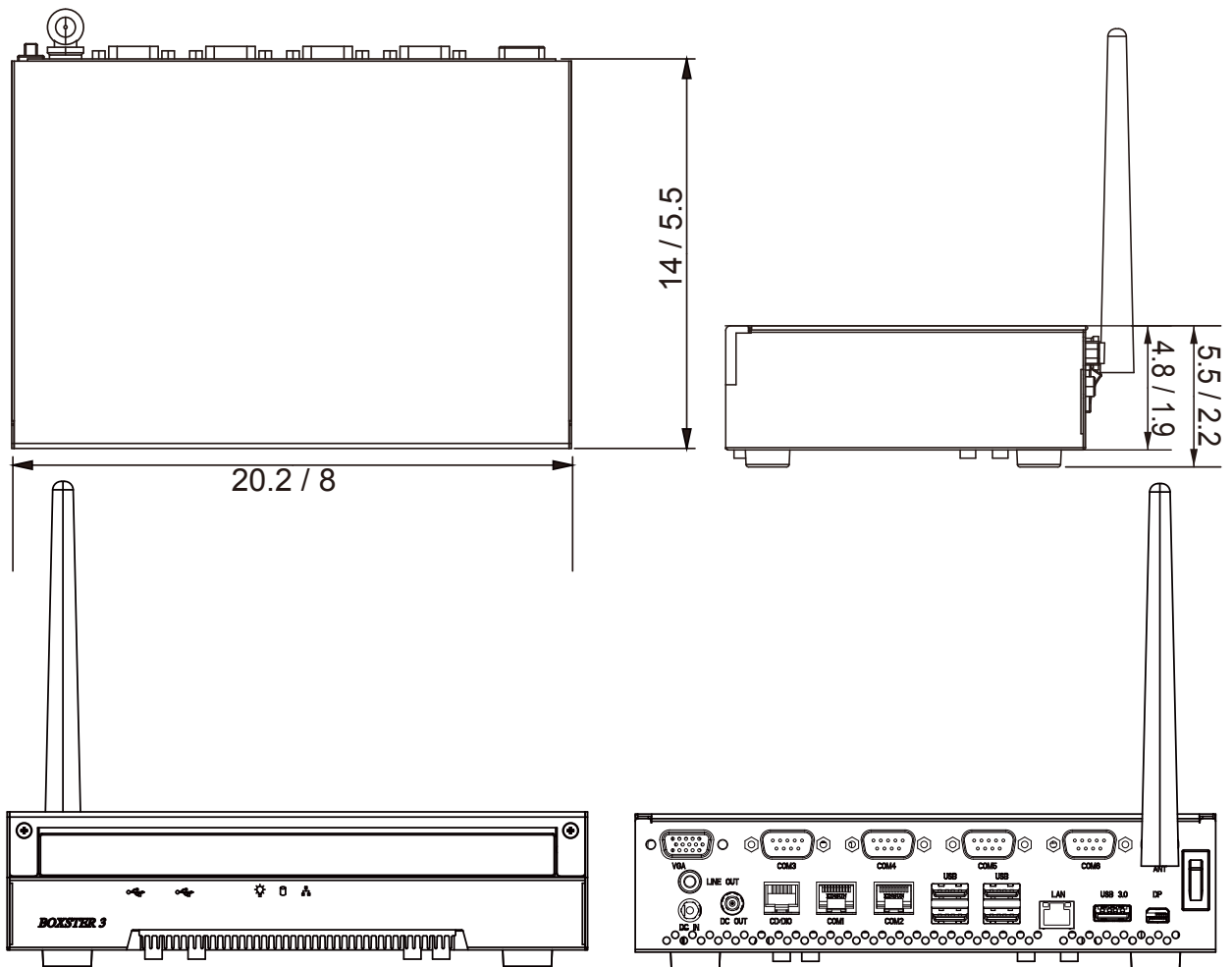


High Serviceability

# I/O Interface



# Dimensions (cm / inch)



# Key Features



- Boxster 3 is designed in small-form-factor with high flexibility and scalability and is ideal for retail applications.



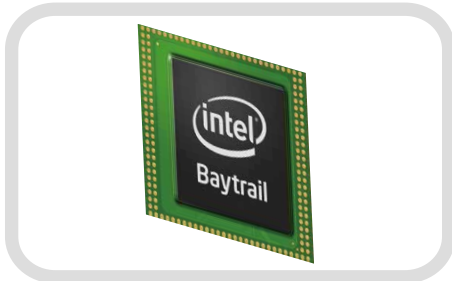
- Wireless function supported (option)



- Serviceability of motherboard and storage makes the maintenance a pleasure to technicians



- Built-in state-of-the-art Intel engine supporting Win 8
- Backward supports Microsoft 7 platform



- The new Intel multicore SoC Bay Trail CPU provides you most effective computing power



- Skidproof rubber feet offers fixed position



- Rich IO wall ensures the wide utilization of POS peripherals



- Fast boot up featured by mSATA SSD & HDD combo storage infrastructure

# Specifications

<b>Model Name</b>	Boxster 3	
<b>Main Board</b>	Main Board	X7C
	CPU	Intel® Bay Trail-Mobile/Desktop SoC Processor: - Celeron® N2930 (4 cores, up to 2.16 GHz, TDP 7.5 Watt) - Celeron® J1900 (4 cores, up to 2.42 GHz, TDP 10 Watt)
	System Memory	SO-DIMM DDR3L 1067/1333MHz x 1, Max. 8GB
	Graphic	Intel® HD Graphics
	Thermal Solution	Fan-less
	BIOS	Phoenix uEFI BIOS
	O.S. support	Windows Embedded POSReady 7 Windows 7 Professional for Embedded Systems Windows Embedded 8.1 Industry Windows 10 Linux kernel 3.0+ & associated distributions Android 4.4.4 Compliant OS
<b>Storage Device</b>	Interface	SATA2 (3.0Gb/S) x 2
	HDD or SSD	2.5" SATA HDD / SSD x 1 mSATA slot x 1
<b>I/O Ports</b>	Serial	Serial Port x 6, DB-9 Pin9 with RI/5V/12V selectable by BIOS. COM 1 / 2: RS-232, RJ-50 with convert to DB-9 cable COM 3: RS-232/422/485, DB-9 COM 4 / 5 / 6: RS-232, DB-9
	USB	USB 3.0 x 1 USB 2.0 x 6
	LAN	Gigabit Ethernet by RJ-45 x 1, support Wake on LAN
	Cash Drawer	RJ-12 x 1, support 12V / 24V DC cash drawer
	Audio	Line out x 1
	VGA	DB-15 with 0/12VDC power (Setting by BIOS) x 1
	Expansion Slot	Half size Mini PCIe x 1
	DP / HDMI	Mini DisplayPort x 1 (supporting active converter cable to VGA, DVI, HDMI)
	DC-in	19VDC input, 2-pins radio jack x 1
	DC-out	12VDC/1A output, 2-pins radio jack x 1
<b>Others</b>	Mounting mechanism	Support VESA Mount (75x75 / 100x100mm available)
	Power Supply	External adapter, 65W, 19V DC input
	Connectivity	Wireless LAN module, half size mini PCIe type (Optional)
	Color	Black
	Material	SECC / Silicon Rubber
	Certifications	FCC / CE / RoHS / VCCI / WEEE
	Ingress Protection	IP32
	Dimension ( WxDxH )	20.2 x 14 x 5.5 cm (8 x 5.5 x 2.2 inch)
	Net Weight / Gross Weight	1.2 kg, 2.6 lb / 2.7 kg, 6 lb
	Operating Temperature	0°C ~ 50°C
	Storage Temperature	-20°C ~ 60°C
	Humidity	20% to 85% RH (non-condensing)

\* Please contact supplier for detail information.



## Ordering information

### Main Unit

Part No.	Description
B03-B-2930	Boxster 3 w/ Intel® Celeron® N2930 2.16GHz
B03-B-1900	Boxster 3 w/ Intel® Celeron® J1900 2.42GHz

### Optional Accessories

Part No.	Description
A0401009	Wireless LAN module with antenna
20200036	2.5" Slim Type HDD: 320GB SATA Type
20300029	Memory: DDR3, 2GB, 204 Pin, SO-DIMM
20300035	Memory: DDR3, 4GB, 204 Pin, SO-DIMM
20900025	OS License: Windows® 7 Professional for Embedded Systems, English Version
20900028	OS License: Windows® Embedded Standard 7, English Version
20900029	OS License: Windows® Embedded POSReady 7, English Version
20900032	OS License: Windows® Embedded 8 Industry Retail, English Version
21600514	mini DP to DVI Cable
21600515	mini DP to VGA Cable
21600516	mini DP to HDMI Cable

Specifications are subject to change without notice. Issue Date: 2015 / 10

# EBN

**EBN Technology Corp.**

10F, No.90, Sec.1, Xintai 5th Rd., Xizhi Dist.,  
New Taipei City 221, Taiwan (R.O.C.)

TEL: +886-2-2696 9292

FAX: +886-2-2696 9393

E-mail: sales@ebn.com.tw

www.ebn.com.tw